



## GENUINE PARTS

### INSTALLATION INSTRUCTIONS

1. **DESCRIPTION:** Rear Splash Guard Kit
2. **APPLICATION:** G Coupe
3. **PART NUMBER:** 999J2 JxxxxB4 (xxxx Designates model year and color)
4. **KIT CONTENTS:**

Item	Qty.	Description	Part Number
A	1	Splash Guard - Rear Right	---
B	1	Splash Guard - Rear Left	---
C	4	Tapping Screw M5	14-51 00891
D	4	U - Nut M5	12-41 0019U
E	2	Push Pin	11296 AG000



A



B



C



D



E

5. **TOOLS REQUIRED:**
  - Clean, Lint-Free Wiping Cloth
  - 100% Isopropyl Alcohol solution
  - #2 Phillips Screwdriver
  - 3/8" (10mm) Socket & Driver
  - Masking Tape
  - Roller
  - Awl or Punch
  - Drill Motor
  - Scissors
  - 1/8" (3mm) Drill Bit
  - 1/4" (6mm) Drill Bit
  - 5/16" (8mm) Drill Bit

#### 6. PRE-INSTALLATION CAUTIONS/NOTES:

#### CAUTION

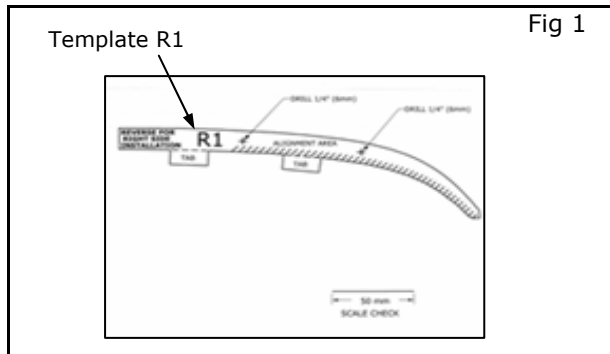
- Install the splash guards when the ambient temperature is above 60°F (15°C).
- Do not wash or expose the vehicle to a wet environment for 24 hours after installing the splash guards.

#### NOTE

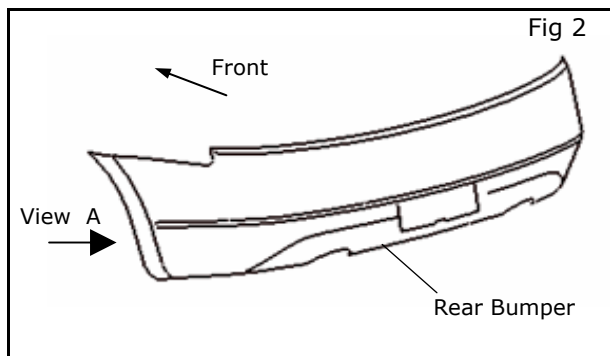
- These instructions are for the left side of the vehicle; the same procedure applies to the right side.
- For the right side installation, use the template with the text facing the vehicle.

# INSTALLATION INSTRUCTIONS - Rear Splash Guard Kit

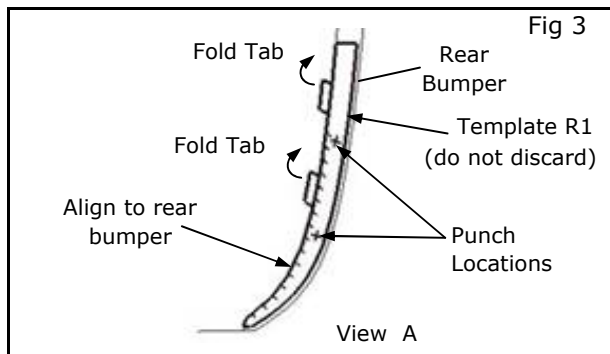
## 7. INSTALLATION PROCEDURE:



- 1) Paper template cutting
  - a) Cut out paper template R1.



- 2) Left, rear vehicle hole drilling
  - a) Apply parking brake.
  - b) Move the selector lever to the P (Park) position (Automatic transmission models). Move the shift lever to the R (Reverse) gear (Manual transmission models).
  - c) Turn off the engine.
  - d) Block wheels, jack up the vehicle, and remove the rear wheel. See specific instructions in the Infiniti Owner's Manual under the heading "CHANGING A FLAT TIRE" in the "6. In case of emergency" section.

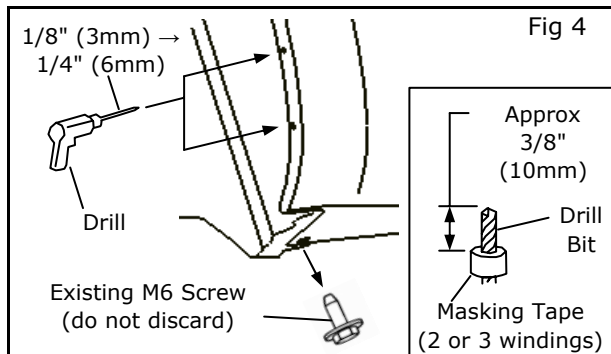


- e) Fold tabs and align Template R1 to the rear bumper. (Fig 3)
- f) Use masking tape to fix the template to the rear bumper.
- g) Center punch at 2 locations. (Fig 3)
- h) Slowly remove the masking tape and Template R1.

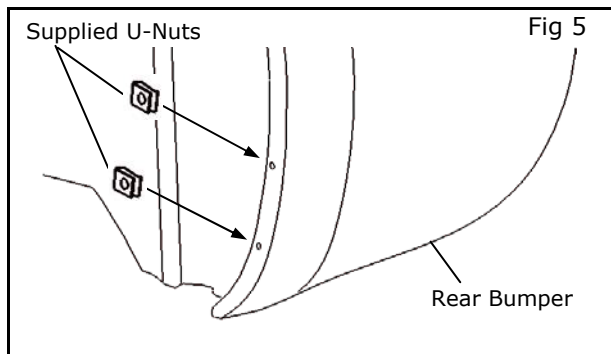
### NOTE:

Be sure not to damage the template during removal, as it will be required for right side splash guard installation.

# INSTALLATION INSTRUCTIONS - Rear Splash Guard Kit



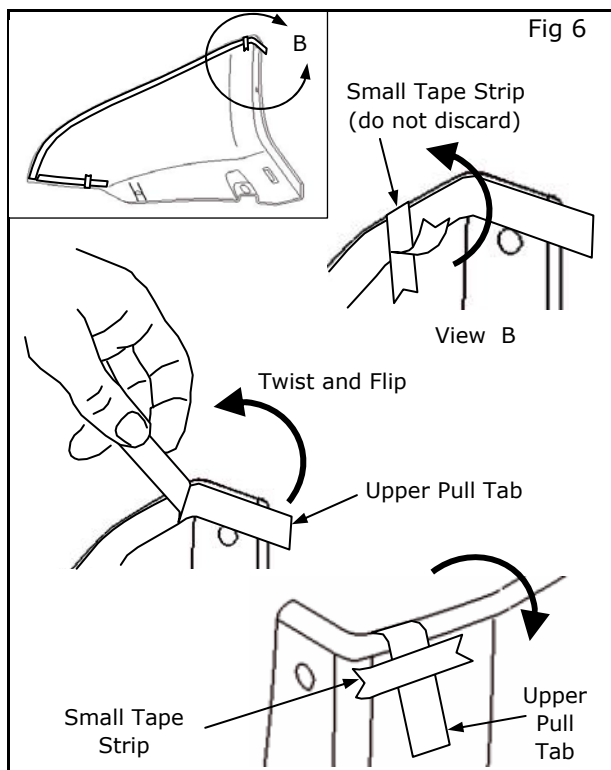
- i) Remove existing M6 screw. Do not discard. (Fig 4)
- j) Wrap masking tape around 1/8" (3mm) and 1/4" (6mm) drill bits, approximately 3/8" (10mm) from the tip. (Fig 4)
- k) Pull the rear bumper outward and drill 1/8" (3mm) → 1/4" (6mm) holes at the 2 marked locations on the rear bumper. (Fig 4)



- 3) Left, rear splash guard installation
  - a) Install 2 supplied U-Nuts on the rear bumper. (Fig 5)
  - b) Using a clean, lint free cloth and 100% Isopropyl Alcohol solution, wipe any dirt, oil and fibers thoroughly from the mounting surface. Let area dry thoroughly.

## CAUTION

- Failure to clean the mounting surface properly may cause the adhesive tape to have poor adhesion to the vehicle.



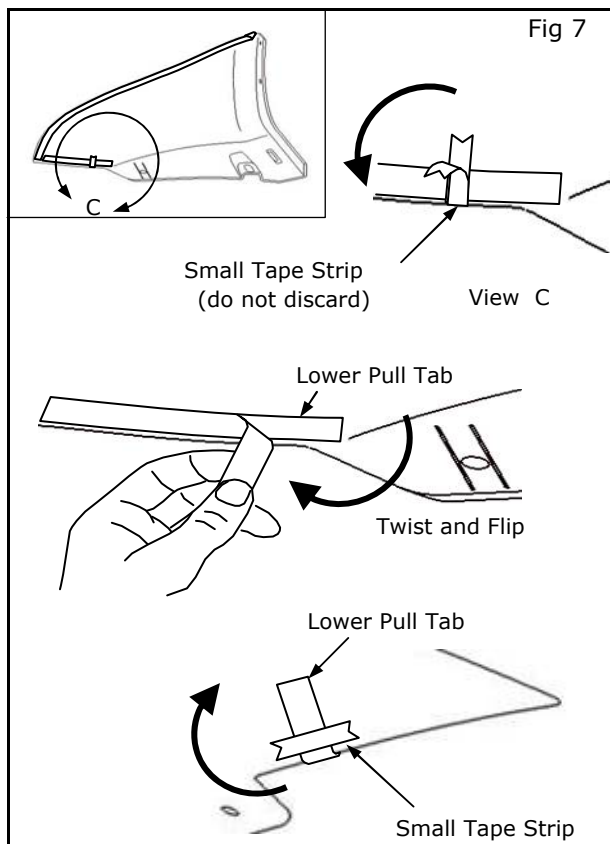
- c) Carefully remove small tape strip. Do not discard. (Fig 6)
- d) Twist and flip upper pull tab toward painted side of splash guard. (Fig 6)

## NOTE:

**Be careful not to expose the tape adhesive under the liner when flipping pull tab.**

- e) Reposition the small tape strip on top of the upper pull tab on painted side of splash guard. (Fig 6)

## INSTALLATION INSTRUCTIONS - Rear Splash Guard Kit

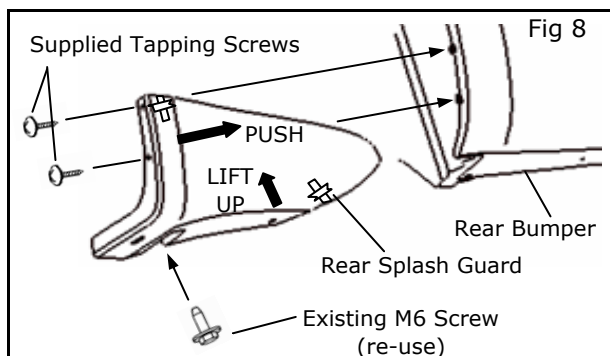


- f) Carefully remove small tape strip. Do not discard. (Fig 7)
- g) Twist and flip lower pull tab toward painted side of splash guard. (Fig 7)

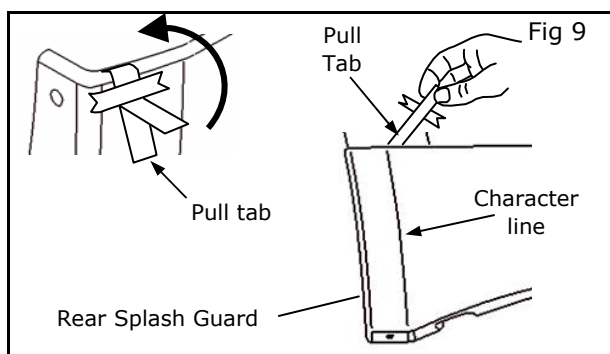
### NOTE:

**Be careful not to expose the tape adhesive under the liner when flipping pull tab.**

- h) Reposition the small tape strip on top of the lower pull tab on painted side of splash guard. (Fig 7)

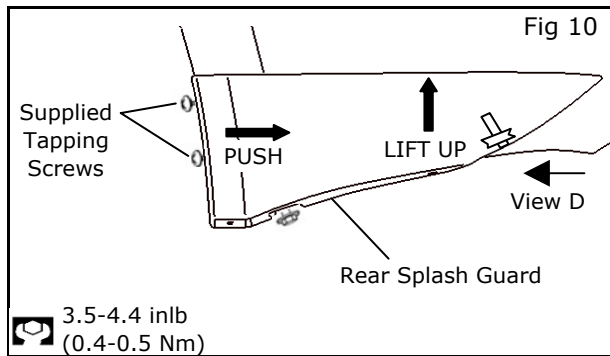


- i) While holding the rear splash guard up and firmly to the vehicle, loosely install existing M6 tapping screw (re-use) in undermost position. (Fig 8)
- j) While holding the rear splash guard up and firmly to the vehicle, loosely install supplied tapping screws. (Fig 8)



- k) Partially remove upper tape liner by slowly lifting pull tab until tape liner reaches the splash guard character line. (Fig 9)
- l) While aligning rear splash guard by pushing rearward + lifting up, apply hand pressure to upper edge where liner was removed to tack in place.

# INSTALLATION INSTRUCTIONS - Rear Splash Guard Kit

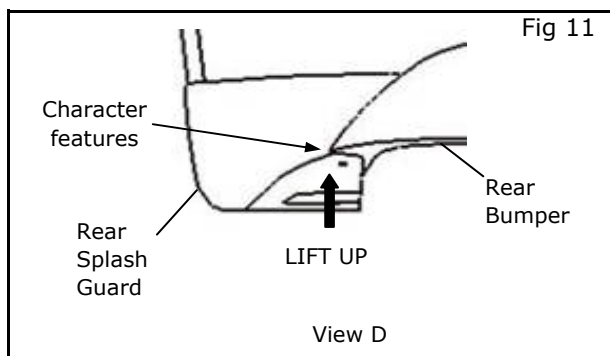


- m) While pushing rearward and lifting up the rear splash guard, tighten supplied tapping screw in uppermost position only, located inside wheel opening. (Fig 10)

Reference tightening torque: 3.5 to 4.4 inlb (0.4 to 0.5 Nm)

- n) While pushing rearward and lifting up the rear splash guard, tighten supplied tapping screw in lower position only, located inside wheel opening. (Fig 10)

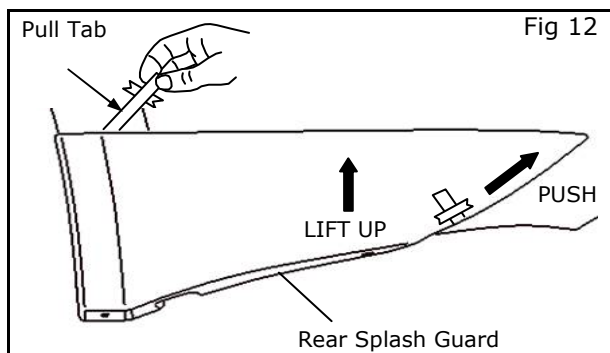
Reference tightening torque: 3.5 to 4.4 inlb (0.4 to 0.5 Nm)



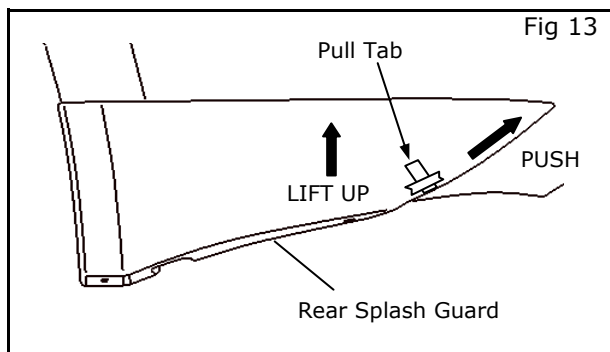
- o) While pushing rearward and lifting up the rear splash guard, try to line up lower character features. (Fig 11)

## NOTE:

**Be sure no gap occurs between rear bumper and splash guard.**

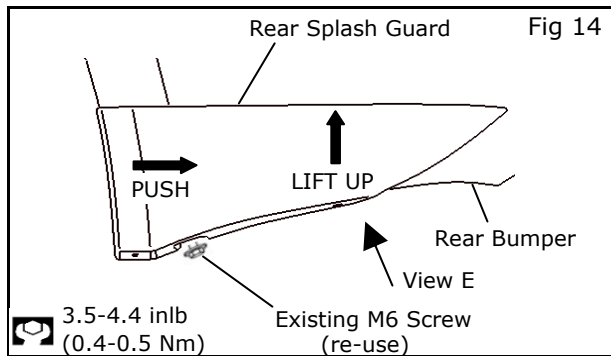


- p) Remove upper tape liner by slowly lifting pull tab at a rearward angle. (Fig 12)
- q) While pushing rearward and lifting up, apply 15 lbs (103 kPa) of pressure to the rear splash guard using a roller or clean cloth, moving from front to rear to attach the splash guard.



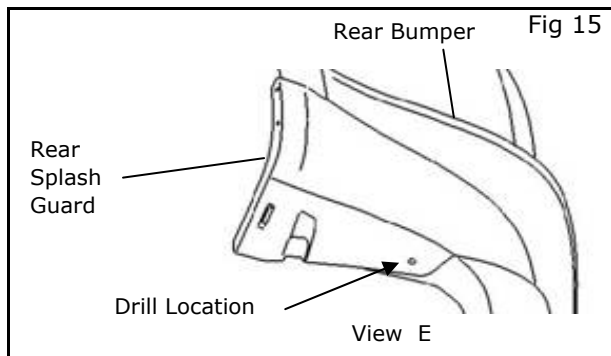
- r) Remove lower tape liner by slowly lifting pull tab at a rearward angle. (Fig 13)
- s) While pushing rearward and lifting up, apply 15 lbs (103 kPa) of pressure to the rear splash guard using a roller or clean cloth, moving from front to rear to attach the splash guard.
- t) Using a roller or clean cloth, reapply 15 lbs (103 kPa) of pressure to top and bottom section of the rear splash guard to assure good tape adhesion.

## INSTALLATION INSTRUCTIONS - Rear Splash Guard Kit

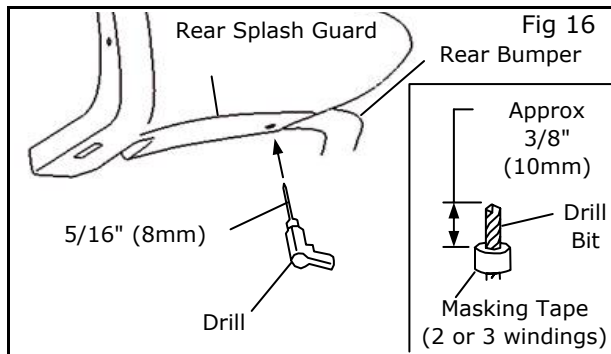


- u) While pushing rearward and lifting up the rear splash guard, tighten existing M6 screw (re-use) located under the rear splash guard. (Fig 14)

Reference tightening torque: 3.5 to 4.4 inlb (0.4 to 0.5 Nm)

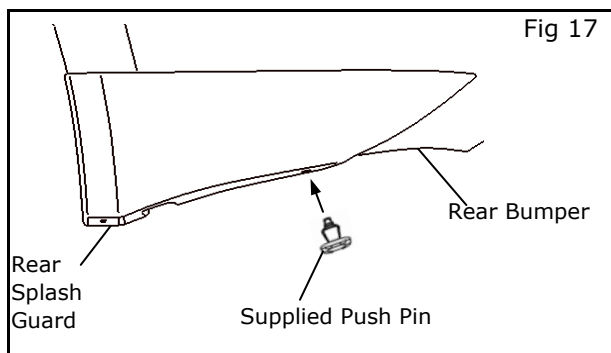


- v) Identify lower drill location. (Fig 15)



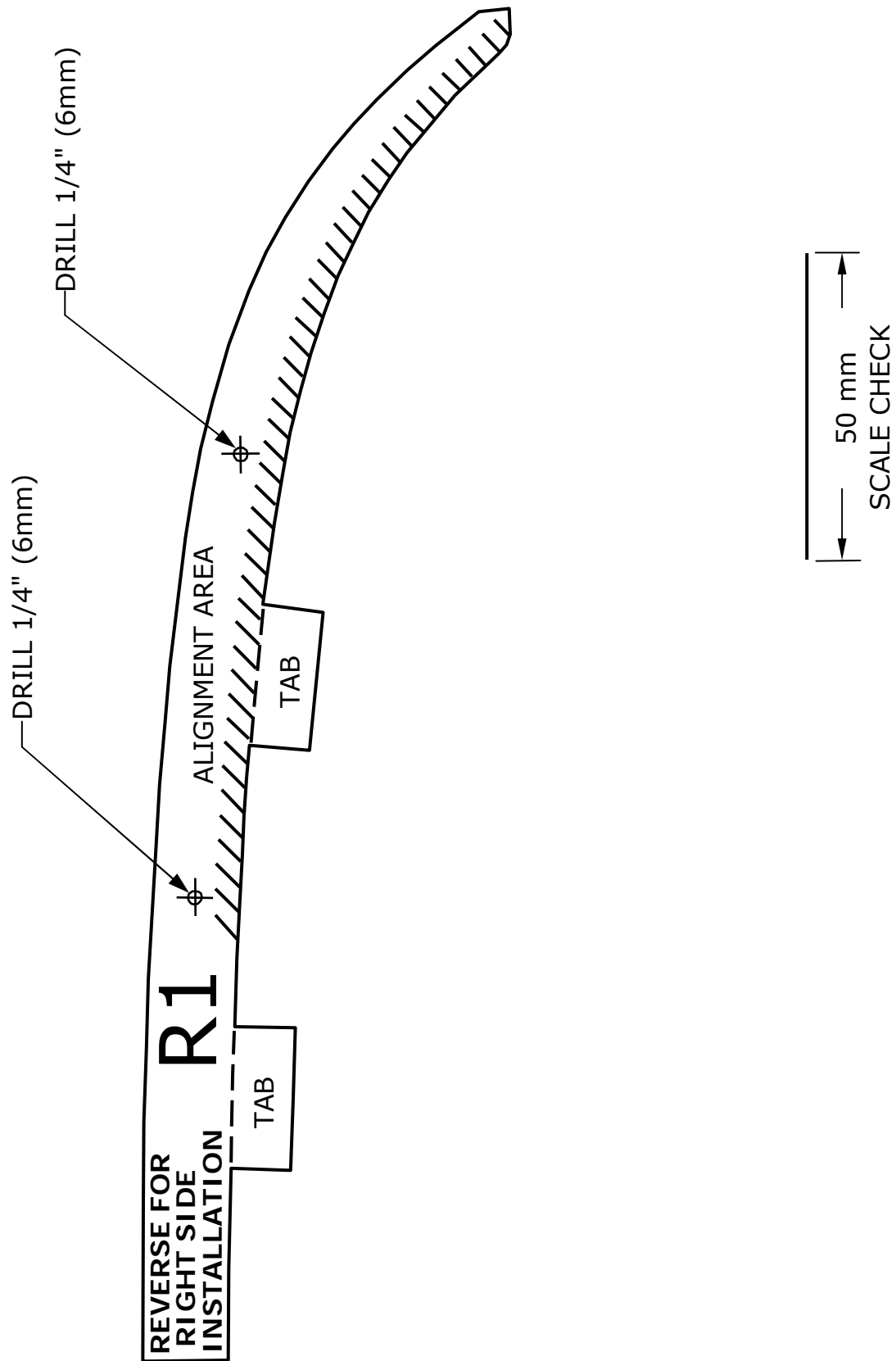
- w) Wrap masking tape around 5/16" (8mm) drill bit, approximately 3/8" (10mm) from the tip. (Fig 16)

- x) Carefully place 5/16" (8mm) drill bit in the rear splash guard hole and drill hole. (Fig 16)



- y) Install the supplied push pin. (Fig 17)
- z) Reinstall rear wheel and lower the vehicle. See specific instructions in the Infiniti Owner's Manual under heading "Installing the spare tire" in the "6. In case of emergency" section.

# INSTALLATION INSTRUCTIONS - Rear Splash Guard Kit



## INSTALLATION INSTRUCTIONS - Rear Splash Guard Kit

This page intentionally left blank.